

ANALYTICAL SOLUTIONS TO ADD VALUE TO THE NATURAL PRODUCT INDUSTRY



MATT MILLER, JONATHAN PUDDICK, DONATO ROMANAZZI

THE CAWTHRON STORY

- Thomas Cawthron: investor, businessman, philanthropist, visionary.
- Left £231K in his will, the equivalent of \$127M.
- Pioneering science since 1921.
- NZ's largest independent science organisation.
- 300 Scientific & Technical staff over 4 sites contributing to a wide range of research and analytical work.
- \$48 million p.a. Revenue



THEN....

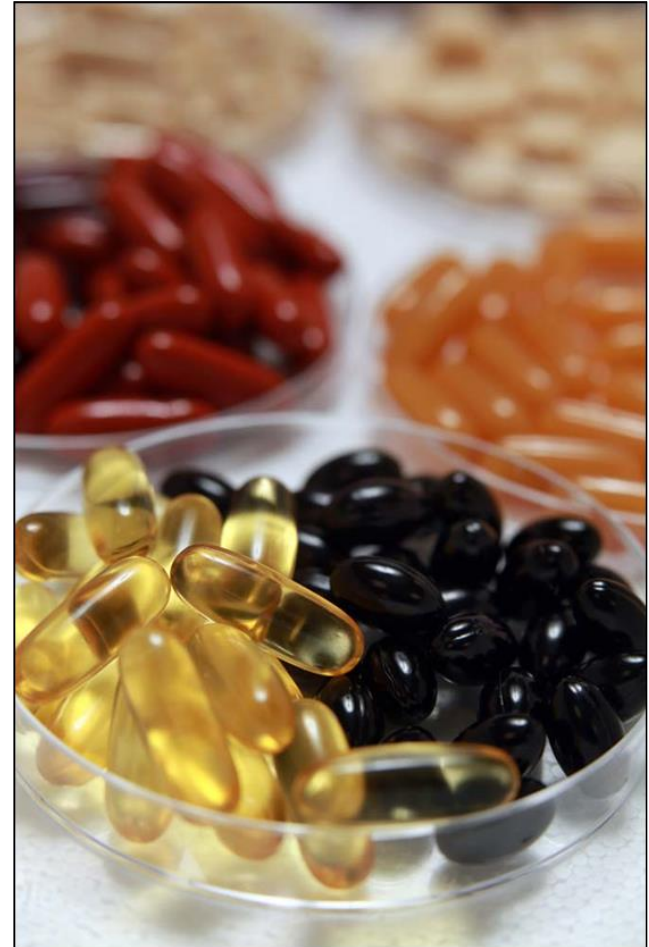


NOW....



CAWTHRON CAPABILITIES INCLUDE:

- Algal Technologies
- Marine Biosecurity
- Coastal & Freshwater Resource Management
- Aquaculture management & Selective breeding
- **ANALYTICAL SCIENCE**
 - Food safety & quality
 - Natural products and dietary supplement testing
 - Research & Method Development



NATURAL PRODUCTS TESTING

Routine testing for NZ industry

- Chemistry
- Microbiological
- Stability

Accreditation

- IANZ
- GMP
- US FDA
- TGA
- Medsafe

Robust Internal Quality systems



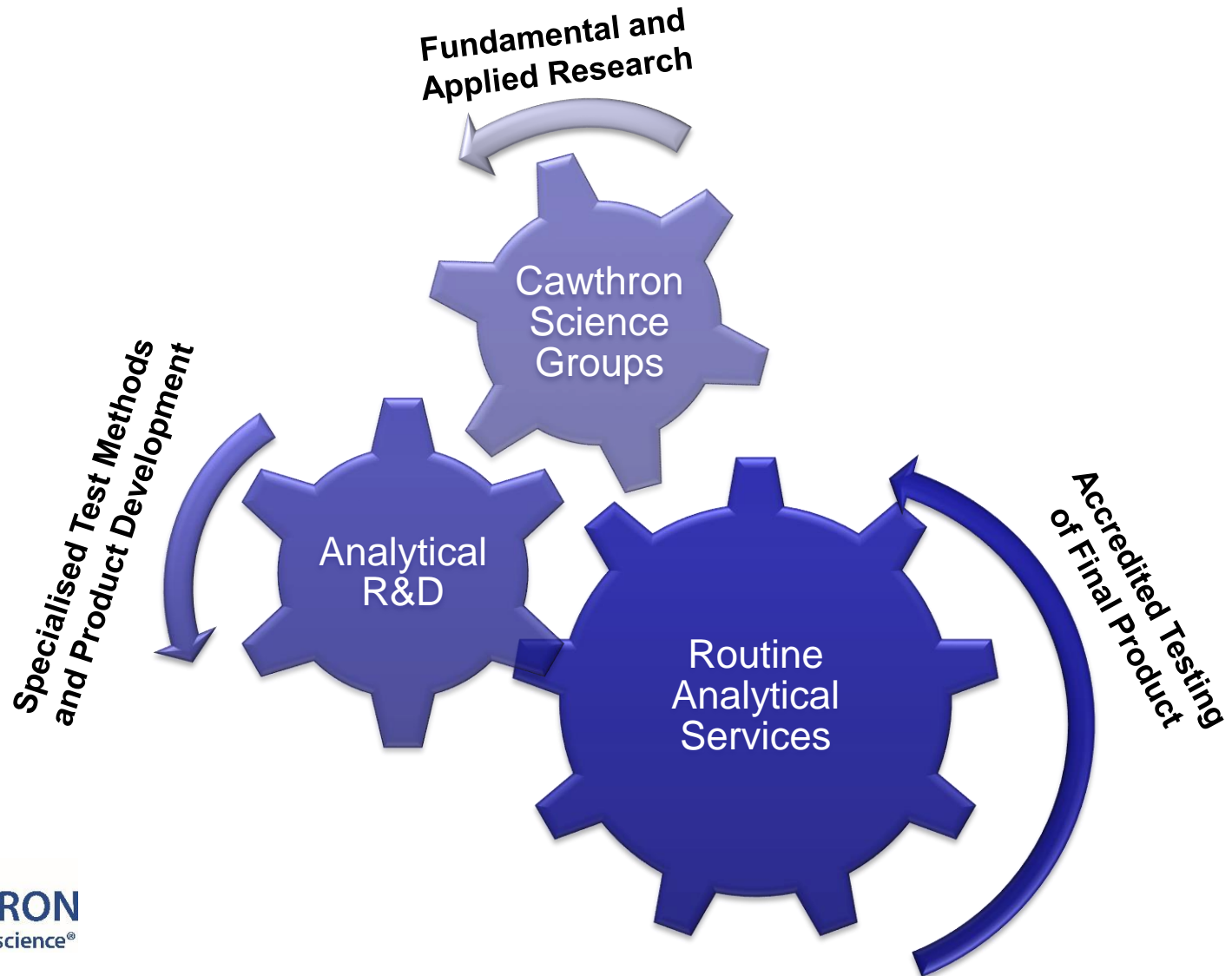
INSTRUMENTATION

- Liquid Chromatograph Mass Spectrometers (LC-MS)
- High Performance Liquid Chromatographs (HPLC / UPLC)
- Preparative LC (FPLC)
- Gas Chromatographs (GC)
- Inductively-Coupled Plasma (ICP MS)
- UV-Vis Spectrophotometers
- UV-Vis & Fluorescence plate readers
- FTIR spectrometer
- Near infrared (NIR) spectroscopy
- Supercritical CO₂ extractor



CAWTHRON UNIQUENESS

INTER-RELATED GROUPS FACILITATE INNOVATION



EXAMPLES OF HOW CAWTHRON IS ADDING VALUE



EXAMPLE

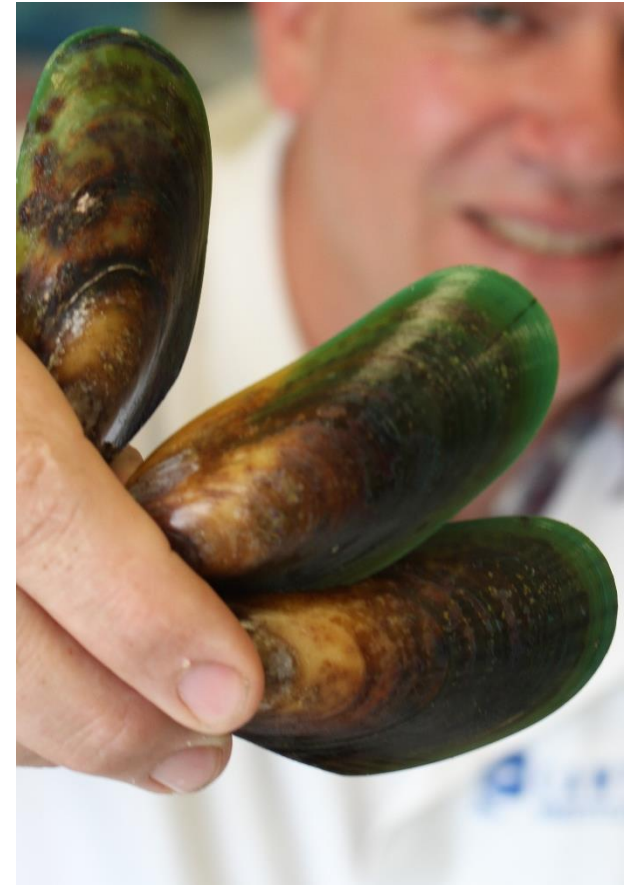
RE-VALUING THE MUSSEL WITH HVN

National
Science
Challenges

HIGH-VALUE
NUTRITION

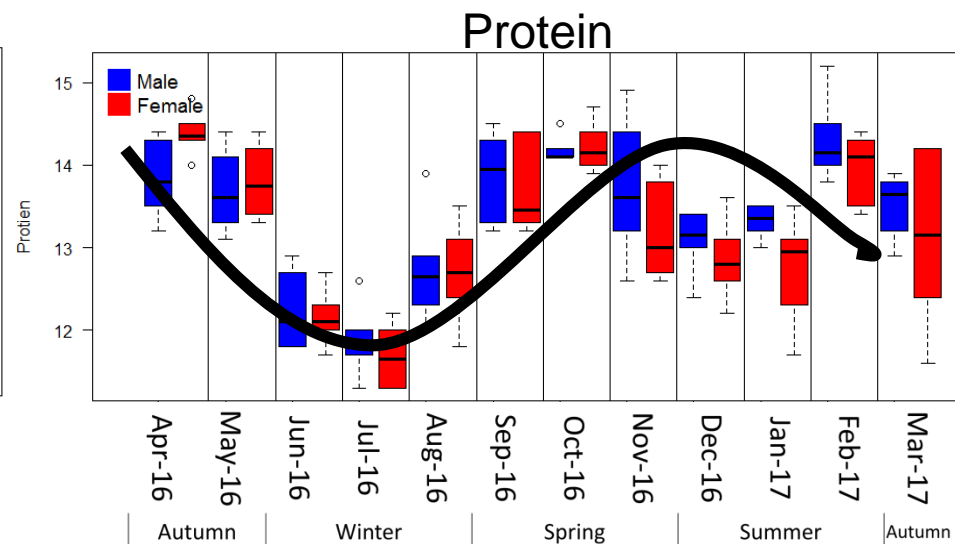
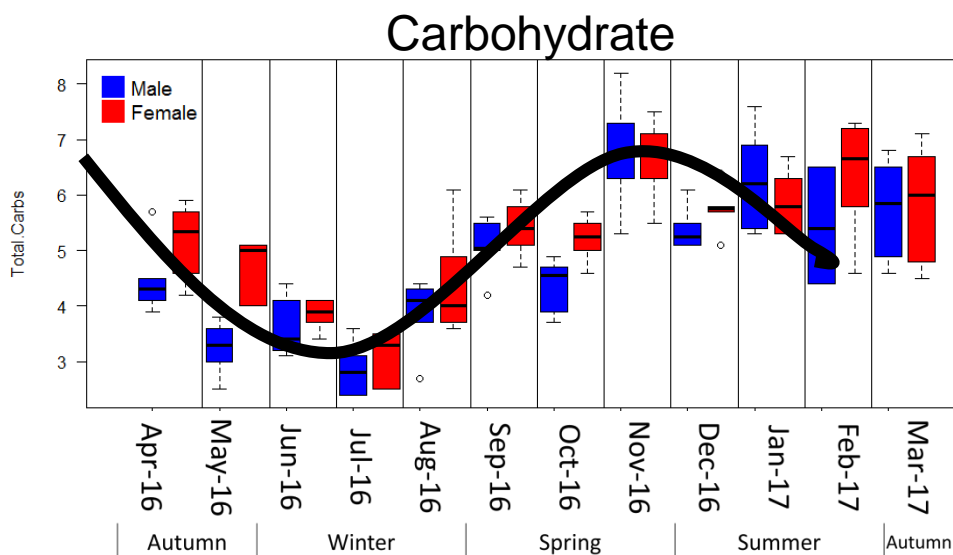
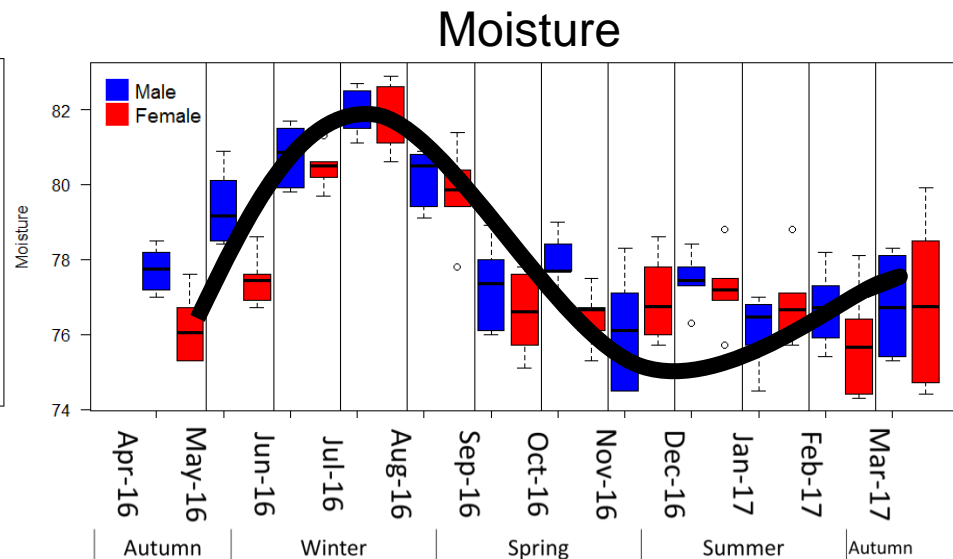
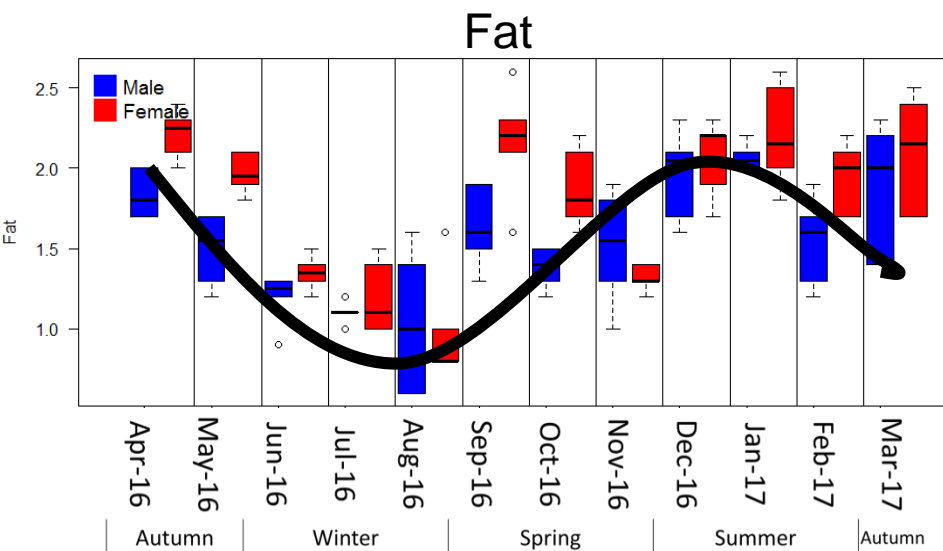
Ko Ngā Kai
Whai Painga

- Aim to increase the value of Greenshell Mussel™ (GSM) food exports.
- By determining the effect of GSM products (and bioactives within) on joint and bone health while reducing inflammation
- Cawthron Institute and Sanford Ltd business led research
 - Customer focus
 - Aiding industry shift



PROXIMATE COMPOSITION OF GSM OVER 12 MONTHS – FAT, CARBOHYDRATES, PROTEIN AND MOISTURE

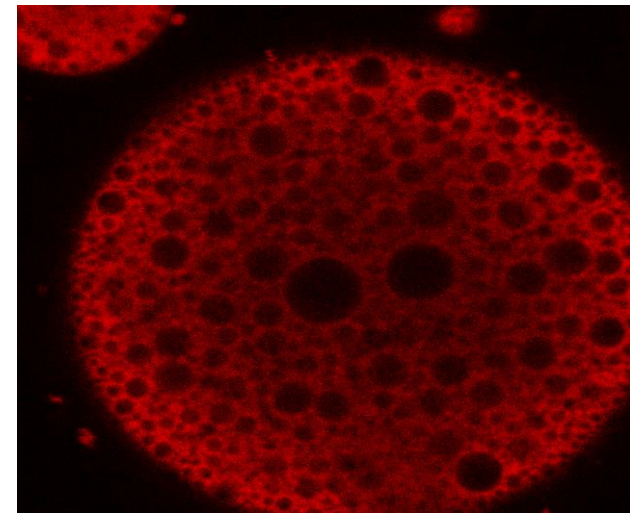
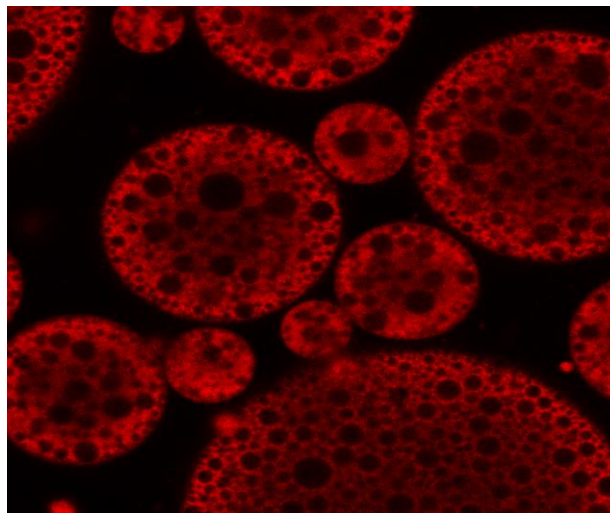
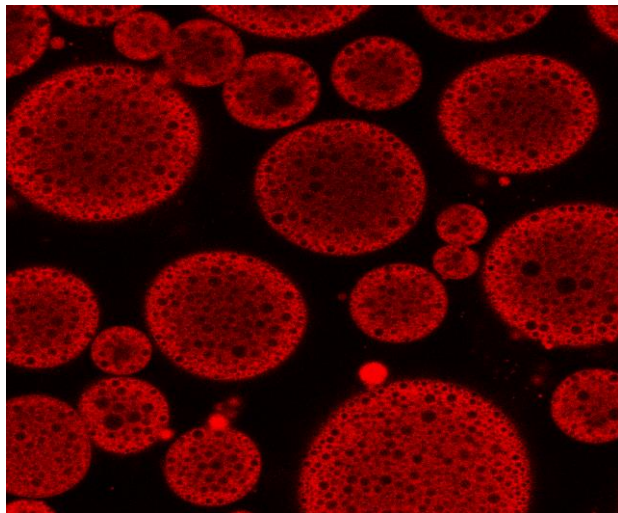
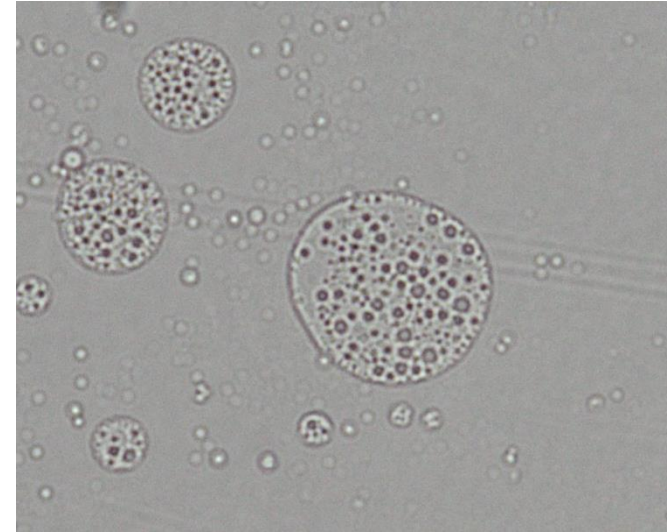
Miller, M. R. and H. Tian (2018). *Aquaculture Research* **49**(3): 1153-1165.



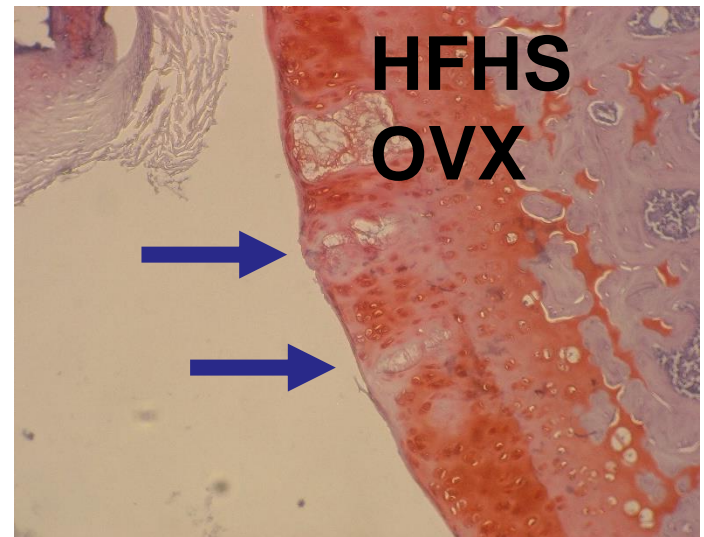
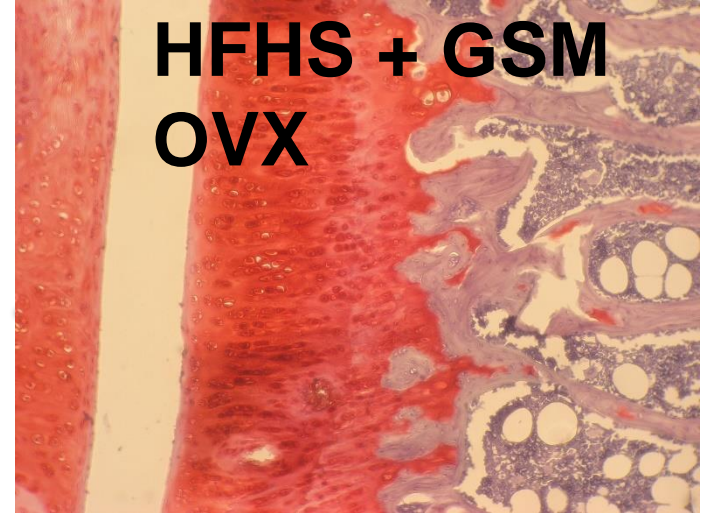
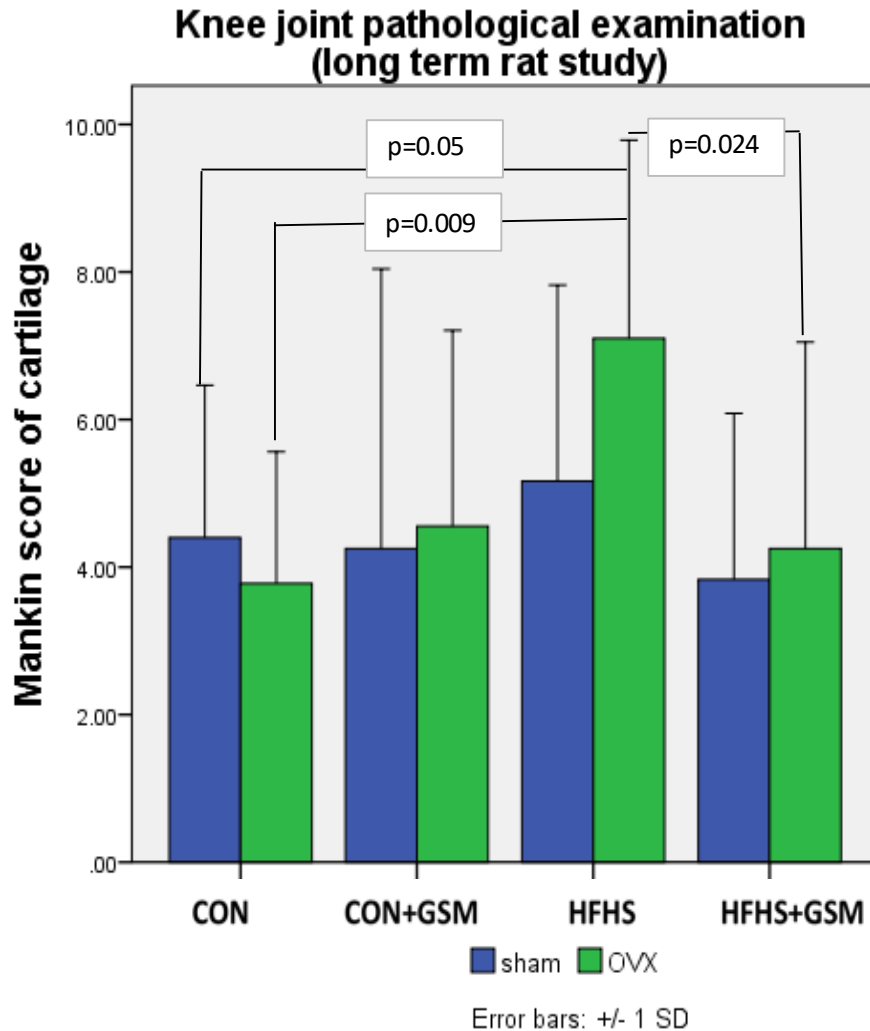
FOOD DEVELOPMENT

In collaboration with Massey School of Food and Advanced Technology

- Developing new food ingredients and food products – can travel
- Encapsulation
- Spray drying
- Smoothies and health beverages

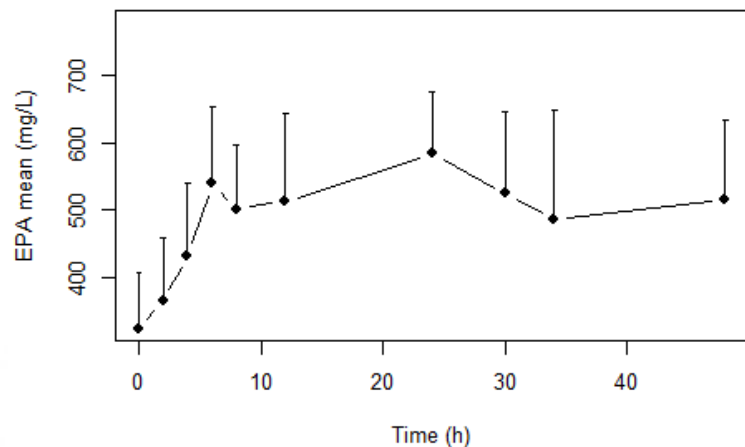


EFFICACY OF BIOACTIVES

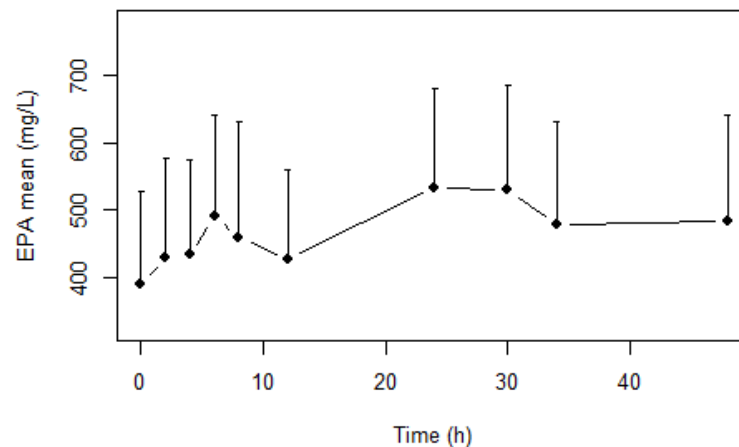


CLINICAL TRIALS – PHARMACOKINETIC

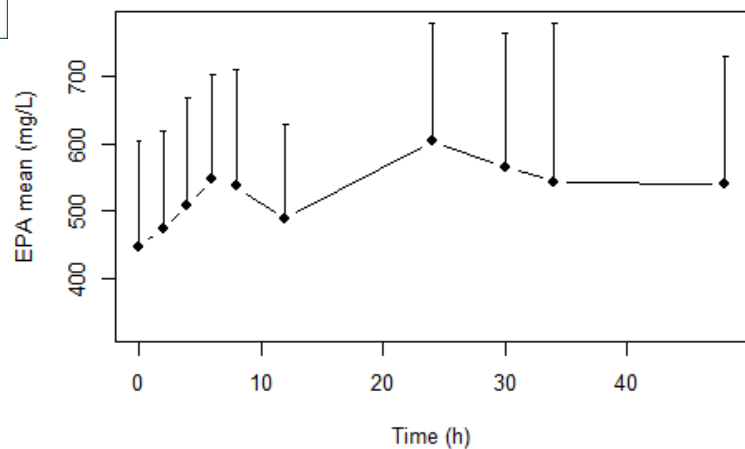
Frozen half-shell GSM



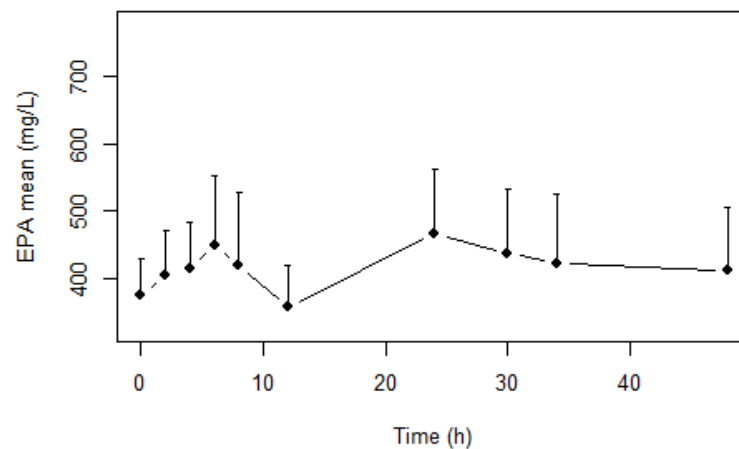
GSM food ingredient



GSM powder



GSM oil



EXAMPLE 2 – ENHANCING CAPABILITY WITH NOVEL TOOLS

NIR – NEAR INFRARED SPECTROSCOPY



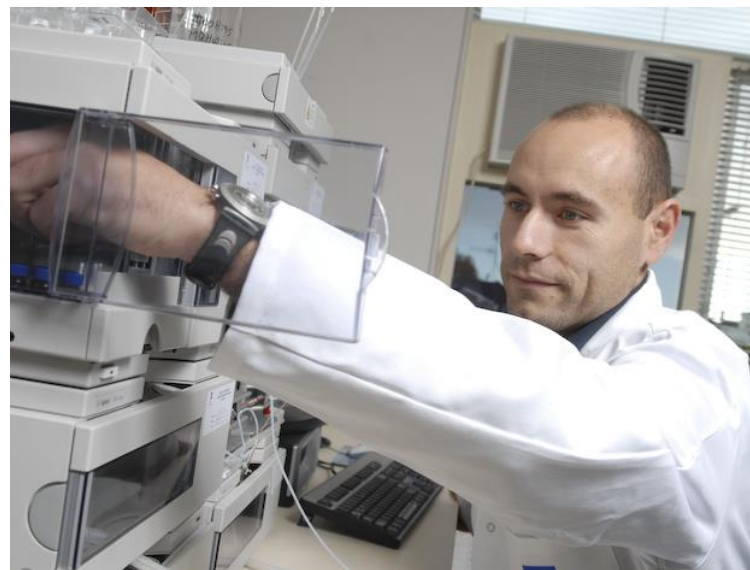
RAPID ANALYSIS

Standard (chemical) lab techniques: Food lab accredited lab

- Well established methods
- Precise and reproducible
- Accredited

However

- Cost
- Timeframe



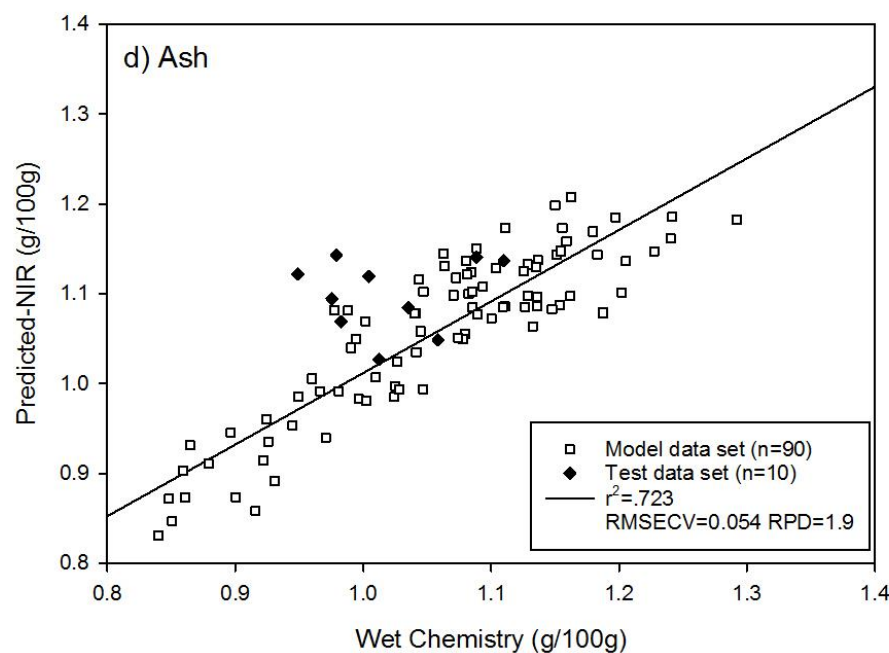
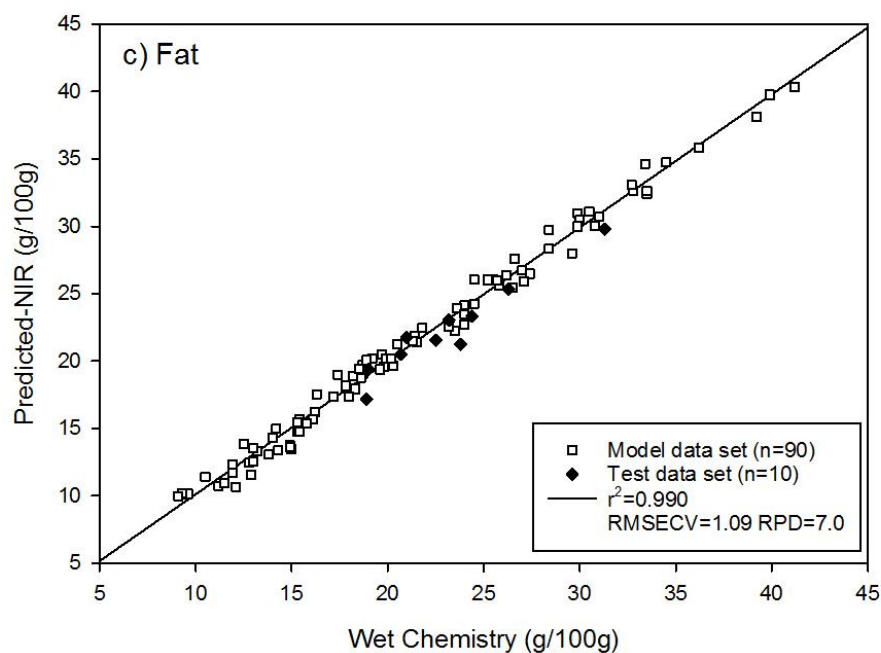
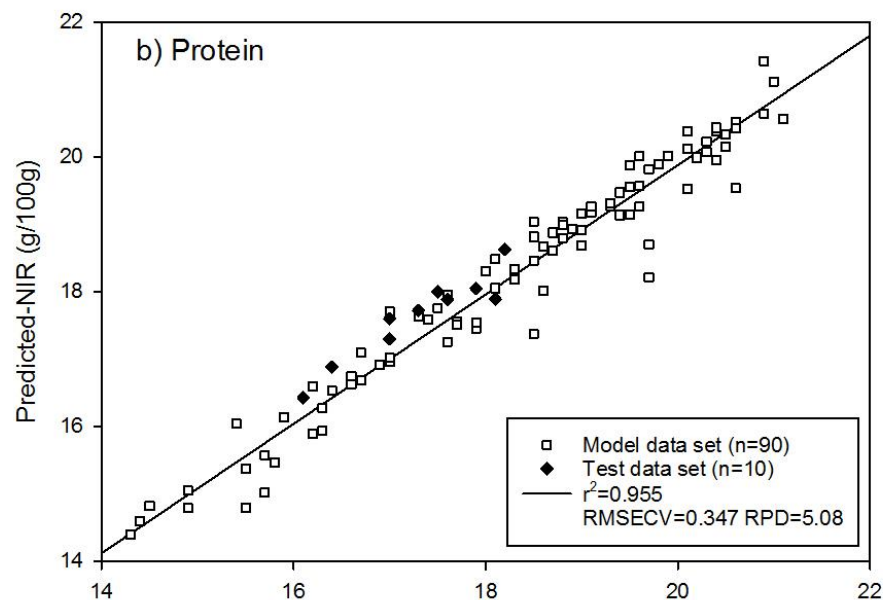
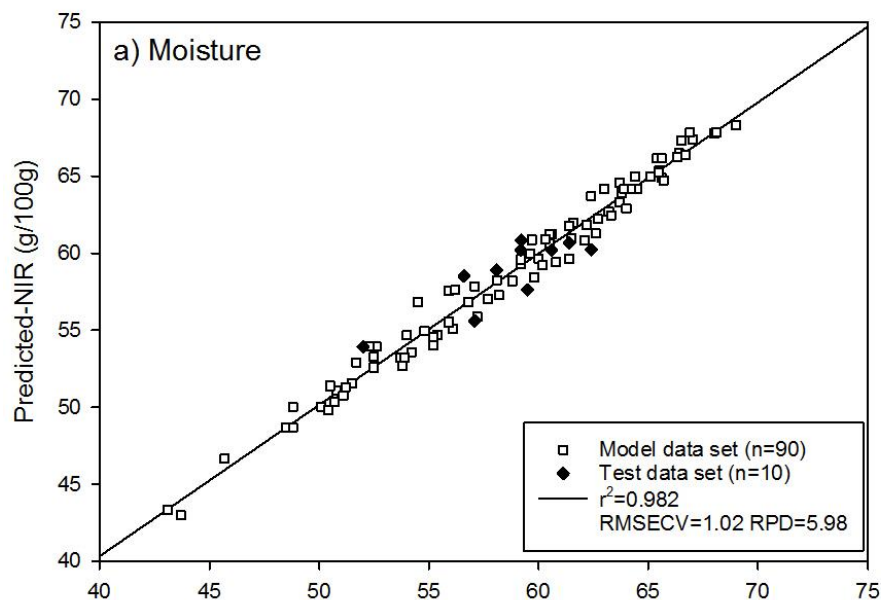
Rapid NIR analytical techniques:

- Fast (10 seconds), cheap, high throughput
- Method development (\$\$)
- Doesn't need precision of lab methods – screening
- Can determine – most things in abundance over 1-2%

VIDEO



NIR MODELS



EXAMPLE 3: HUATAUKĪNA TŌ IWI E: DEVELOPING MARINE BIOACTIVES ECONOMIC OPPORTUNITIES FROM TAIRĀWHITI KĪNA TO COMBAT DIABETES, HEART DISEASE AND INFLAMMATION



AIMS OF PROJECT

- Produce groundwork knowledge to build a viable kīna marine bioactives industry
- Development of a health-promoting supplements.
- Stimulate economic development in Tairāwhiti
- Partnership between Hikurangi Bioactives Limited, local hapū and Cawthron Institute.
- Move from low-value commodity to high-value products
- Increase diversity and complexity of New Zealand seafood exports
- Greater economic benefits, particularly for remote rural communities.

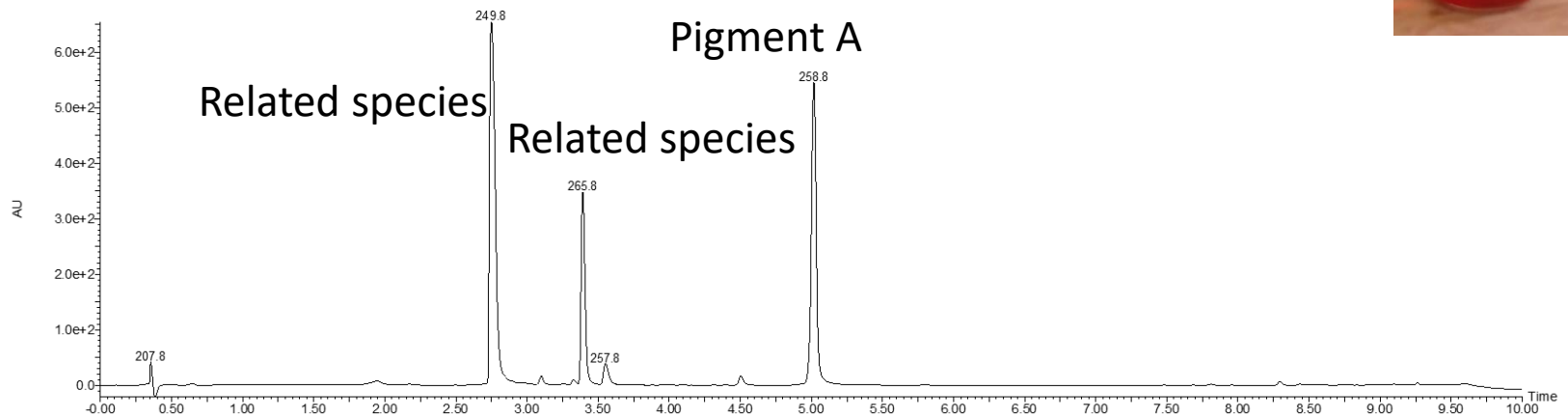
National
Science
Challenges

SUSTAINABLE
SEAS

Ko ngā moana
whakauka

DEVELOPMENT OF METHODS

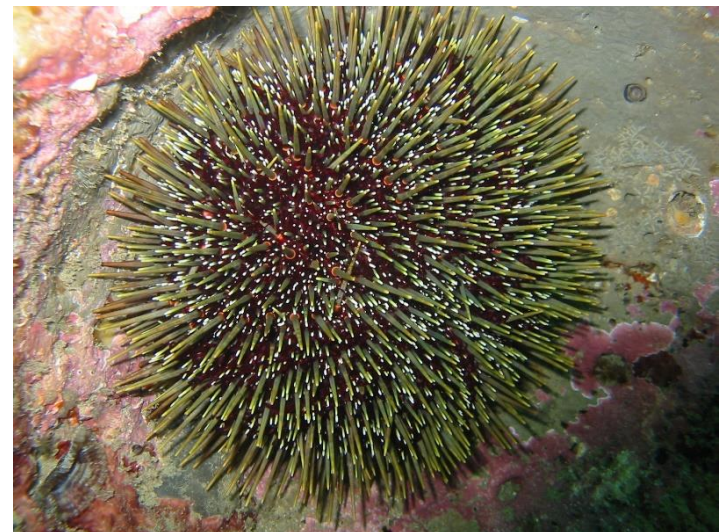
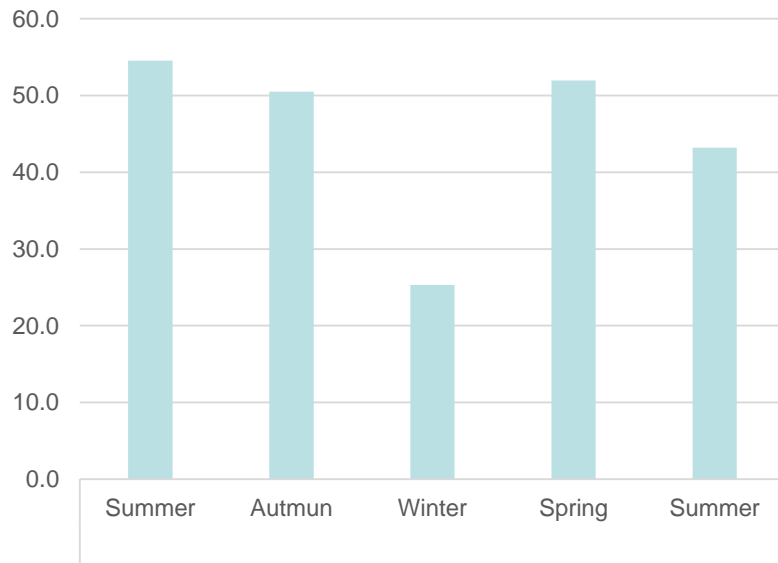
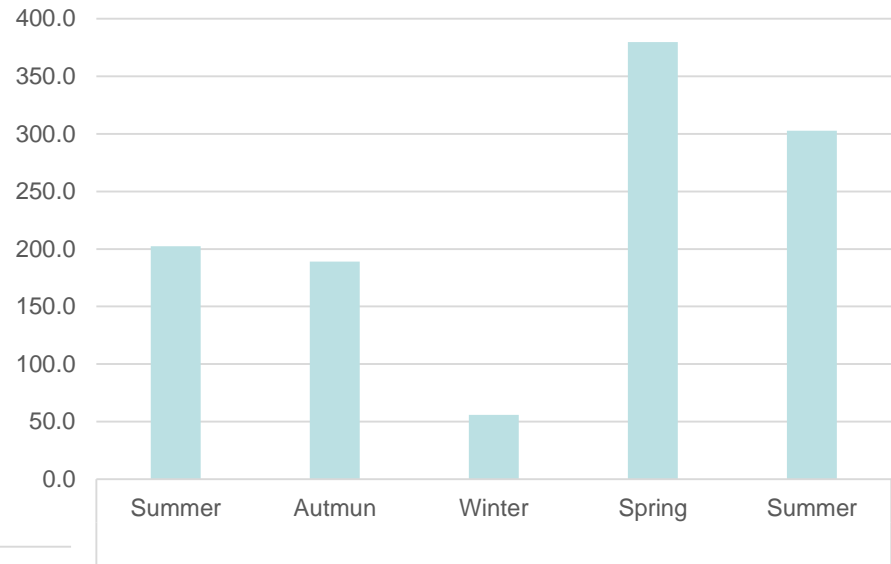
1. Pigment B



PIGMENT B EXTRACTION

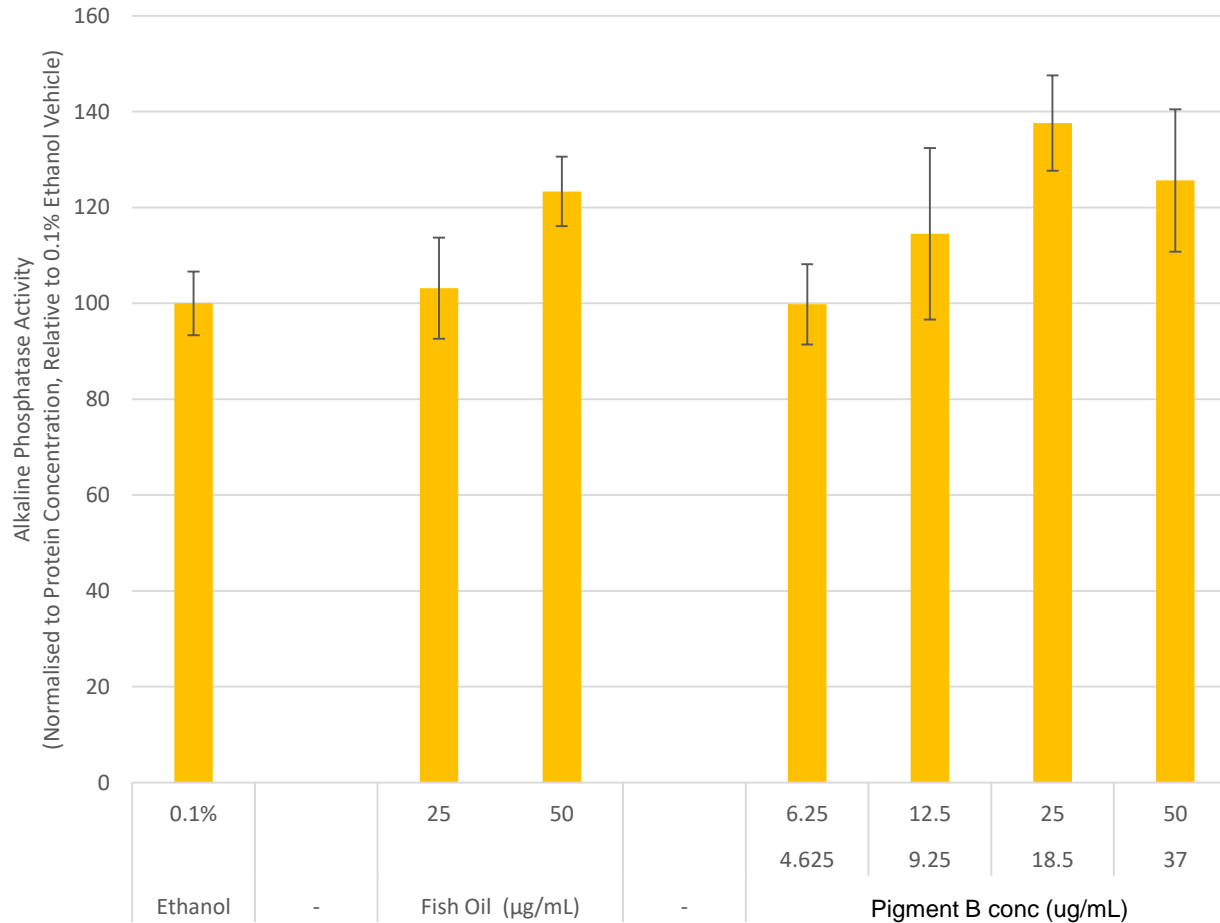


SEASONAL DIFFERENCES OF BIOACTIVES



DEMONSTRATE PRE-CLINICAL EFFICACY ENHANCES BONE DEPOSITION

Alkaline Phosphatase Activity Following Seven Days
Kina Oil Exposure



- Kina extract increases ALP activity in MC3T3-E1 mouse osteoblasts
- ALP activity is a marker of bone deposition
- Increased ALP activity indicates echinenone may enhance bone formation



MASSEY UNIVERSITY

NATURAL PRODUCTS FROM THE MARINE ENVIRONMENT



OPPORTUNITIES FOR NZ MARINE BIOACTIVES

- Pristine growing environment adds market appeal.
- Unique endemic species:
 - Greenshell mussel
 - Other shellfish
 - Pāua
 - Kina
 - Seaweeds
- Interesting bioactives:
 - Anti-inflammatory lipids
 - Anti-oxidant carotenoids
 - Bioactive peptides
 - Bioavailable glycolipids



ADDING VALUE TO BIOACTIVES

- Biologically-derived compounds with functional benefit for human or animal health:

Decreasing Value

- Pharmaceuticals
 - Nutraceuticals
 - Cosmeceuticals
 - Functional food ingredients
 - High-end pet food
-
- Might be delivered as:
 - Pure compound
 - Extract
 - Food ingredient
 - Whole food



OUR RESEARCH CAPABILITY INCLUDES:

- Identification of new sources of marine bioactives
- Preparation and stabilisation of extracts
- Chemical characterisation (specialised testing)
- Efficacy testing (collaborative partnerships)
- Improved yields in source material
- Optimisation of extraction conditions
- Stability testing of final product
- Access and advice on government funding



WHO WE ARE WORKING WITH



COLLABORATION IS KEY – OUR RESEARCH PARTNERS



MEDICAL RESEARCH
INSTITUTE
OF NEW ZEALAND



MASSEY UNIVERSITY



CHRISTCHURCH

CLINICAL
STUDIES
TRUST Ltd



MALAGHAN
INSTITUTE
OF MEDICAL RESEARCH



HOKKAIDO
UNIVERSITY



UNIVERSITY of
TASMANIA



CAWTHRON
The power of science®



IMAS
INSTITUTE FOR MARINE
& ANTARCTIC STUDIES

CONTACTS FOR RESEARCH RELATED ENQUIRIES

Donato Romanazzi
Industry Liaison Analytical Science
Cawthron
Donato.Romanazzi@cawthron.org.nz
0064 3 548 2319 extn 360



Matt Miller
Research Scientist Analytical R&D
Cawthron
Matt.miller@cawthron.org.nz



World Congress on Oils & Fats 2020

9-12 February 2020
International Convention Centre
Sydney | Australia

www.wcofsydney2020.com



Cawthron. The power of science.™