

Ministry for Primary Industries
Manatū Ahu Matua



SFF Futures

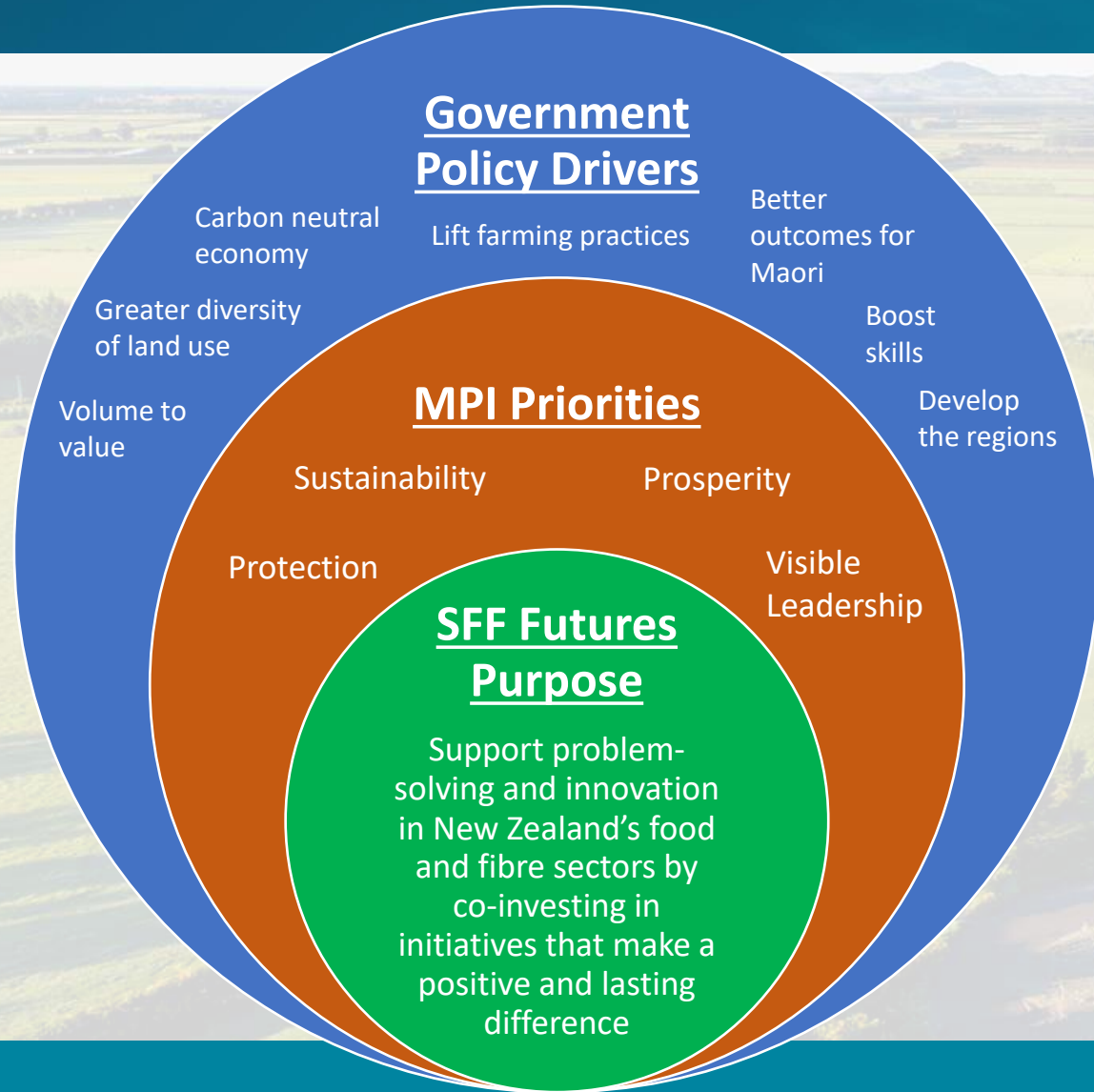
Make it happen

\$40 million
annual investment

SFF Futures

Project co-funding
less than **\$100,000** to
more than **\$5 million**

Strategic Context



Progress to Date



Funding Types

Funding type	Programme cost	Contract length (years)	Expected time from application to contract
Partnerships	Over \$5 million	5 or more	12 months
Small Partnerships	\$2 million to \$5 million	3 to 5	12 months
Grants	Less than \$2 million	Up to 3	6 months
Small Grants	Up to \$100,000	Up to 1	3 months



Key Questions to Consider

- Will your project make a positive difference to our food and fibre sectors, the people who work in them, the environment or wider New Zealand?
- How will you be able to show the difference your project will make?
- Why do you need government funding for your project?

Eligibility & Criteria

Who can Apply?

Those in the primary food and fibre sectors who have a game-changing innovation they want to bring to life, including businesses, NGOs, research organisations, training institutions, Māori landowners, Iwi, community groups and industry bodies.

Assessment Criteria

Sustainable Benefits for New Zealand



Economic

Financial benefits might be cost savings, or increased profits. They may be shared by everyone involved in the project or even go wider.



Environmental

The impact on the natural environment – land, soil, water, plants and animals.



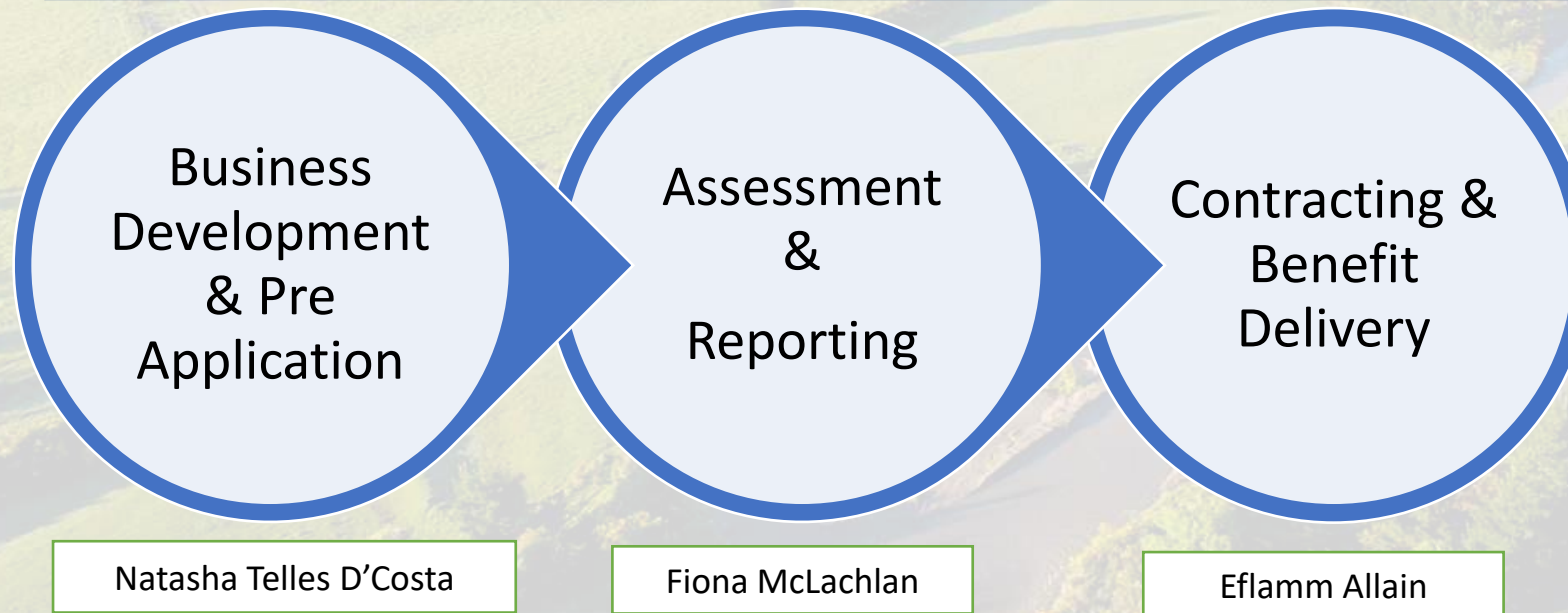
Social & Cultural

These benefits include people's skills, knowledge, physical and mental health, cultural identity and the connections between people and communities

Who can you contact?

SFF Futures is managed by AIS's Investment Programmes Directorate led by Steve Penno

The fund is run via a shared leadership model



What's it for?

We're looking for projects that support these objectives:

- Improved environmental performance.
- Economically prosperous food and fibre industries.
- Thriving and sustainable rural communities.
- An innovative, world-leading and future-ready primary sector.

Who can apply?

Anyone with an idea that meets our criteria can apply.

Previous applicants include:

- Businesses.
- NGOs.
- Research organisations.
- Training institutions.
- Māori landowners.
- Iwi.
- Community groups.
- Industry bodies.

Assessment criteria

Projects will be assessed on the following criteria:

- Sustainable benefits to New Zealand.
- The extent to which Government funding is critical to the project.
- The fit with relevant strategies.
- Plans to drive uptake.
- Experience and capability.
- Identification and mitigation of risks.
- Budget.

What can we fund?

We fund a wide range of projects all over New Zealand. This includes dealing to pests and cleaning up waterways, connecting farmers and industry professionals to boost sustainability, productivity and profitability, developing new, cutting-edge technology, and more. Fisheries and aquaculture projects are also in scope.

We're unable to fund:

- projects that require full funding;
- capital expenditure purchases that subsidise commercial operations;
- contestable research applications.

What's the application process?

If you're talking to a stakeholder and they mention an idea that could be eligible for SFF Futures funding please refer them to Natasha Telles D'Costa:

- Natasha.TellesDCosta@mpi.govt.nz
- 04 894 2447 or 022 013 9477

She can help guide them through the pre-application process to give them the best chance of success.



How long does contracting take?

Funding type	Programme cost*	Contract length (years)	Expected time from application to contract
Partnerships	Over \$2 million	3 or more years	12 months
Grants	Less than \$2 million	Up to 3 years	6 months
Small grants	Up to \$100,000	Up to 1 year	6 weeks

*relates to MPI component of funding.



Agriculture & Investment Services
Ministry for Primary Industries
Manatū Ahu Matua

SFF Futures

Make it happen

Sustainable Food & Fibre Futures (SFF Futures) supports problem-solving and innovation in New Zealand's food and fibre sectors by co-investing in initiatives that make a positive and lasting difference. We welcome projects of any size, from small grassroots community ventures to large-scale industry development.

\$40
million

\$40 million available per year



Co-investment funding



Projects from up to \$100,000 to over \$5 million (MPI funding)

www.sff-futures.mpi.govt.nz
sff.futures@mpi.govt.nz

0800 00 83 33 | sff.futures@mpi.govt.nz | www.sff-futures.mpi.govt.nz

www.sff-futures.mpi.govt.nz